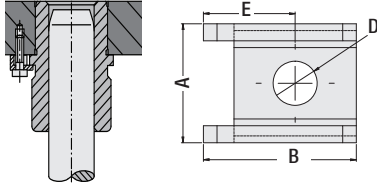
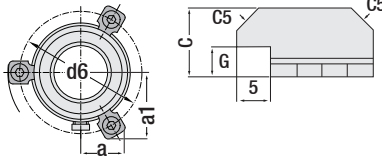


Montaj Örneği



Kalıp Plaka Konum



Burç Tutucu

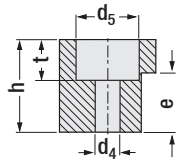
Kod: G 101

| Ø d Burç | A mm | B mm | C mm | D mm | E mm | G mm | Form |
|--|---------|---------|---------|---------|---------|---------|-------------------|
| 32 / 40 50 / 63 63 / 80 100 115 | 17.5 | 22.5 | 12 | 6.5 | 13.5 | 6 | A (M6 x 20) |
| 32 / 40 50 / 63 63 / 80 100 115 125 | 21 | 25.5 | 13.5 | 8.5 | 15 | 5.5 | B (M8 x 20) |

Grafitli ve diğer burçlar ile kullanılır.
Ø ≤ 63 - 2 adet ve Ø ≥ 80 - 3 adet tutucu
kullanılır. Montaj civataları ayrıca sipariş edilmelidir.



Sipariş: G101. Form

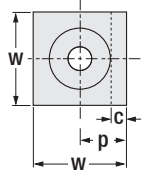


Burç Tutucu

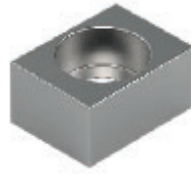
Kod: G 102E

Ref: CNOMO

Sipariş Örneği:
G102E.40



| Burç | w | p | h | e | c | t | d ₄ | d ₅ |
|------|----|-----|----|----|---|----|----------------|----------------|
| 40 | 18 | 9.5 | 12 | 8 | 3 | 7 | 6.6 | 11 |
| 50 | 22 | 12 | 16 | 10 | 4 | 9 | 9 | 15 |
| 63 | | | 20 | 12 | | | | |
| 80 | 26 | 15 | 25 | 16 | 5 | 11 | 11 | 18 |
| 100 | | | 32 | 20 | | | | |

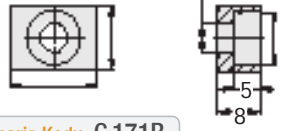


Tutucu Kama Blok

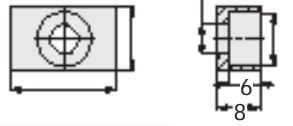
Malzeme: CK45

Kod: G 171

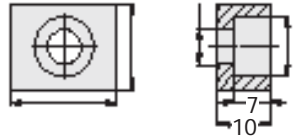
Sipariş Kodu: G 171A



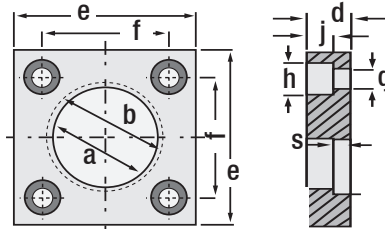
Sipariş Kodu: G 171B



Sipariş Kodu: G 171C



Uyumlu
Kolonlar:
G03
G04
G05



Kolon Tutucu Flaş

Kod: G 119

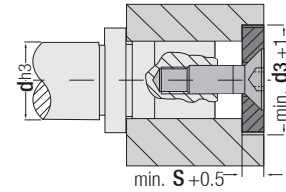
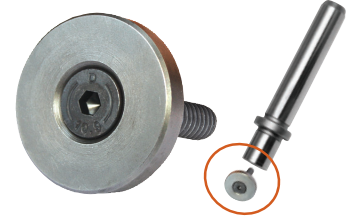
Referans: CNOMO

Referans: PSA

| a Kolon | b | d | e | f | g | h | j | s |
|------------|-----|----|-----|-----|-----|----|----|-----|
| 25 | 28 | | 45 | 31 | | | | 2.7 |
| 32 | 37 | 10 | 56 | 36 | 6.6 | 11 | 7 | |
| 40 | 45 | 12 | 70 | 50 | | | | 4.2 |
| 50 | 55 | 14 | 80 | 55 | 9 | 16 | 9 | |
| 63 | 70 | 18 | 100 | 70 | 11 | 18 | 11 | |
| 80 | 87 | 20 | 110 | 80 | | | | 6.2 |
| 100 | 107 | 20 | 140 | 100 | 13 | 22 | 14 | |



Sipariş: G119. a (kolon)



* Pres kalıplarında ortadan şapkalı kolonların montajında min. d3 + 1 kullanılan güvenli ürün.
* Enj. kalıp itici plakalarının altı için destek elemanı.

Kolon Montaj Flaş

Kod: G 110

Kolon Bağlama / Kalıp İçi Destek Elemanı

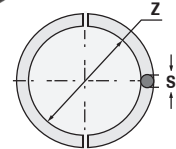
| Ø d3 | Kolon Çapı d | Flaş S | Cıvata M |
|---------|-----------------|-----------|-------------|
| 22 | 15 / 16 | 5.5 mm | M8 x 20 |
| 25 | 19 / 20 | | |
| 32 | 24 / 25 | | |
| 40 | 32 / 30 | 7.5 | |
| 50 | 38 / 40 | 9.5 mm | |
| 60 | 48 / 50 | | |
| 73 | 60 / 63 | | |
| 93 | 80 | 12 | M12 x 20 |

Sipariş:
G110. d3

Sipariş Örneği:
G110.50



Uyumlu Kolonlar:
G02 - G03 - G04
G05 - G06 - G07
G09 - G20



Kolon Segmanı

Kod: G 112

| Sipariş Kodu | Kolon | z | s |
|--------------|-------|------|-----|
| G11225 | Ø 25 | 22.5 | 2.5 |
| G11232 | Ø 32 | 28 | |
| G11240 | Ø 40 | 36 | 4 |
| G11250 | Ø 50 | 46 | |
| G11263 | Ø 63 | 57 | |
| G11280 | Ø 80 | 74 | 6 |
| G112100 | Ø 100 | 94 | |